

# 2026 JUNE COMMUNITY GRANTS GUIDELINES

## Making a positive impact where our families live and work

### Who we are and what we do

The Anthony Costa Foundation is a family foundation established to support the philanthropy of the Anthony and Elaine Costa and the Robert and Rita Costa families.

The Foundation seeks to make a positive impact in the communities where our families live and work by ensuring children and young people can thrive, everyone has a safe place to live and our communities are vibrant. Given the strong ties both families have to Geelong region, in Victoria, the Foundation's geographic focus for giving is on eligible organisations, projects, initiatives, or activities within this region.

### Grantmaking principles

The Foundation's grantmaking is guided by the following principles:

#### Flexibility and Responsiveness

Understanding that community needs can change, sometimes quickly, we seek to be responsive and flexible in order to make progress and have the greatest impact.

#### Balance

We work to achieve balance in our by investing in projects and organisations that address immediate needs and support long term systemic change. We also seek to balance receiving unsolicited applications and seeking out proposals on issues and from organisations of interest.

#### Collaboration

We encourage collaboration and partnerships – between grantees and others and between ourselves and others (including grantees) – in order to achieve greater impact.



#### Impact

We are driven by the difference a project and an organisation can make for individuals, organisations, our community and the issue. We recognise this change can take time and are committed to engaging with grantees to understand the change they are creating.

#### Sustainability

Both funders and grantees have a role to play in sustainability: as funders offering multi-year support and support beyond grants and as grantees developing plans that take into account sustainability and build capacity into delivery models where appropriate.

#### Quality and Effectiveness

We invest in non-profits that are effective. We evaluate what we do and make adjustments based on what we learn.

## Community Grant structure

Community Grants offer an opportunity to provide support that empowers applicants to create lasting, positive impact within the Foundation's designated areas of focus. They are designed to be flexible and to allow organisations to meet the needs they are experiencing.

Requests can be made for one-time funding or extended support through multi-year commitments for specific projects/programs (service delivery, capacity building or capital) or general operating support. As a result, the minimum request amount is set at \$50,000.

## Timelines

The timelines for the June Community Grant Round are:

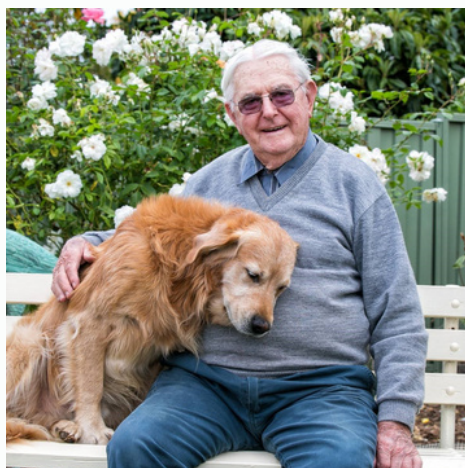
	Applications Open	Applications Close	Funding Decisions	Funding Available From
June Grant Round	11 March 2026	23 April 2026	June 2026	1 November 2026

## Eligibility

To be eligible to apply for a grant from The Anthony Costa Foundation you must:

- Be endorsed as a Tax Concession Charity (TCC), a Deductible Gift Recipient as covered under item 1 of the table in section 30-15 of the Income Tax Assessment Act of 1997 (DGR1) and be registered and up to date with the Australian Charities and Not-for-profit Commission. (Note: under certain circumstances the Foundation may accept auspiced applications);
- Propose a project that will benefit the Foundation's Geographic Focus (see below);
- Propose a project that falls within at least one of the Foundation's Focus Areas (see below); and
- Agree to the Foundation's Grant Conditions

Please see the Foundation's [website](#) for what we do not fund.



## Geographic focus

Given the strong ties both families continue to have to the Geelong region of Victoria, the Foundation only accepts requests that will impact and benefit the Geelong region.

The Geelong region is defined as the following five local government areas:

- City of Greater Geelong
- Surf Coast Shire
- Borough of Queenscliffe
- Golden Plains Shire
- Colac Otway Shire

## Focus areas

The Foundation currently accepts applications related to the following Focus Areas:

### Thriving Children and Young People

Children and young people (aged 0-25 years old) are an important part of the communities where we live and work. Unfortunately, there are too many children and young people that experience barriers and challenges that impact their ability to reach their full potential. While there are many elements that can contribute to children and young people reaching their full potential the Foundation will only accept applications in this Focus Area related to:

- Mental health and well-being
- Equity and opportunity in education



### A Safe Place to Live

Everyone deserves a safe place to live. Yet many people in the communities where we live and work are homeless or at risk of homelessness. While there are many types and causes of homelessness that make it a complex challenge, the Foundation only accepts applications in this Focus Area related to:

- Homelessness and housing
- Family violence
- Addiction



### Building Vibrant Communities

We want to live and work in communities that are vibrant, inclusive and equitable. While there are many elements that contribute to making communities vibrant the Foundation will only accept applications in this Focus Area related to:

- Food insecurity and basic needs
- Social, economic and cultural inclusion of people with a disability
- Arts and culture



## How to apply

After reviewing our information, if you are interested in submitting an application you must contact us to discuss your potential application. You can send an email ([foundation@costaam.com.au](mailto:foundation@costaam.com.au)) to set up a time. As part of this discussion we will assess how well aligned your potential application is with our interests.

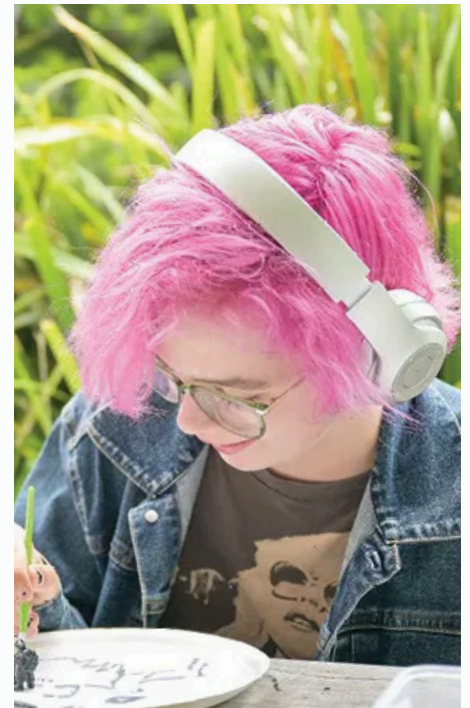
If we believe an application is appropriate you will be provided with a link to register for our Funding Portal. From the Portal you will be able to access the open Community Grant Round and to submit your application. You can download a word version of the application from our [website](#) to assist you in preparation for your online application.

## Assessment process

All applications received will be reviewed by the Foundation staff and Board.

Applications will be assessed on Need (what need does the project meet in the community), Benefit (what difference will it make and to whom) and Delivery (does the organisation have the capacity to effectively deliver the project).

Based on your submission we may follow-up with questions or request additional information.



## Assistance and additional information

As noted above, if you would like to make an application you must discuss your potential application with us before submission. This helps us ensure that your application aligns with our interests and is a good use of your valuable time. We are also happy to share tips on how to write a successful application. You can contact us via [foundation@costaam.com.au](mailto:foundation@costaam.com.au) to request a time to discuss your potential application.

Additional Information about the Foundation and its' grants can also be found on the Foundation's [website](#).